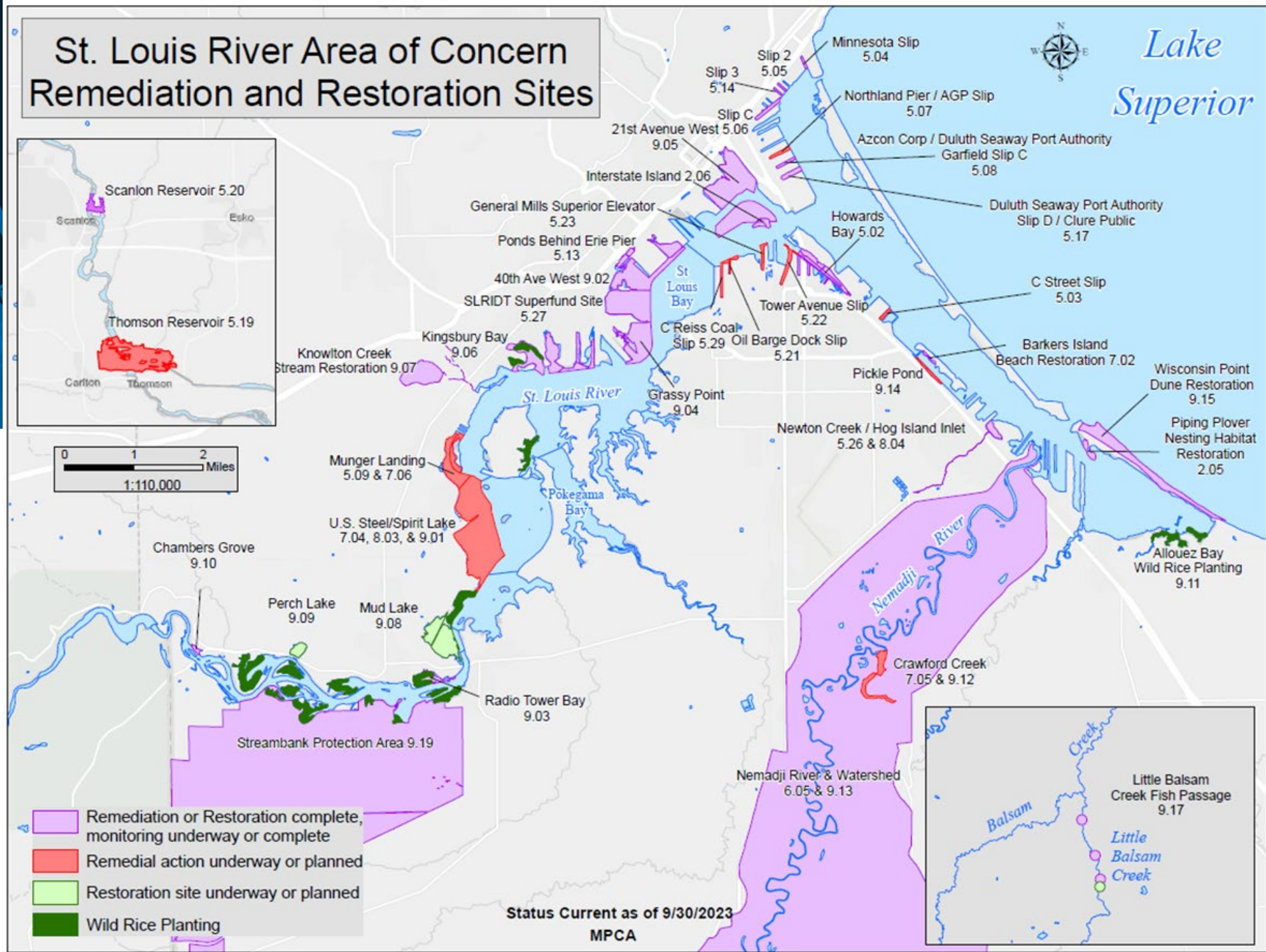


St. Louis River

AOC

A virtual tour of recreation opportunities



“Don’t go near the river” advice is becoming a thing of the past.

As habitat restoration & contaminated sediment remediation projects are completed:

- the river is cleaner
- there are more opportunities for people to connect to the river



Photo: St. Louis River Alliance

“Access needs to be accompanied by information”

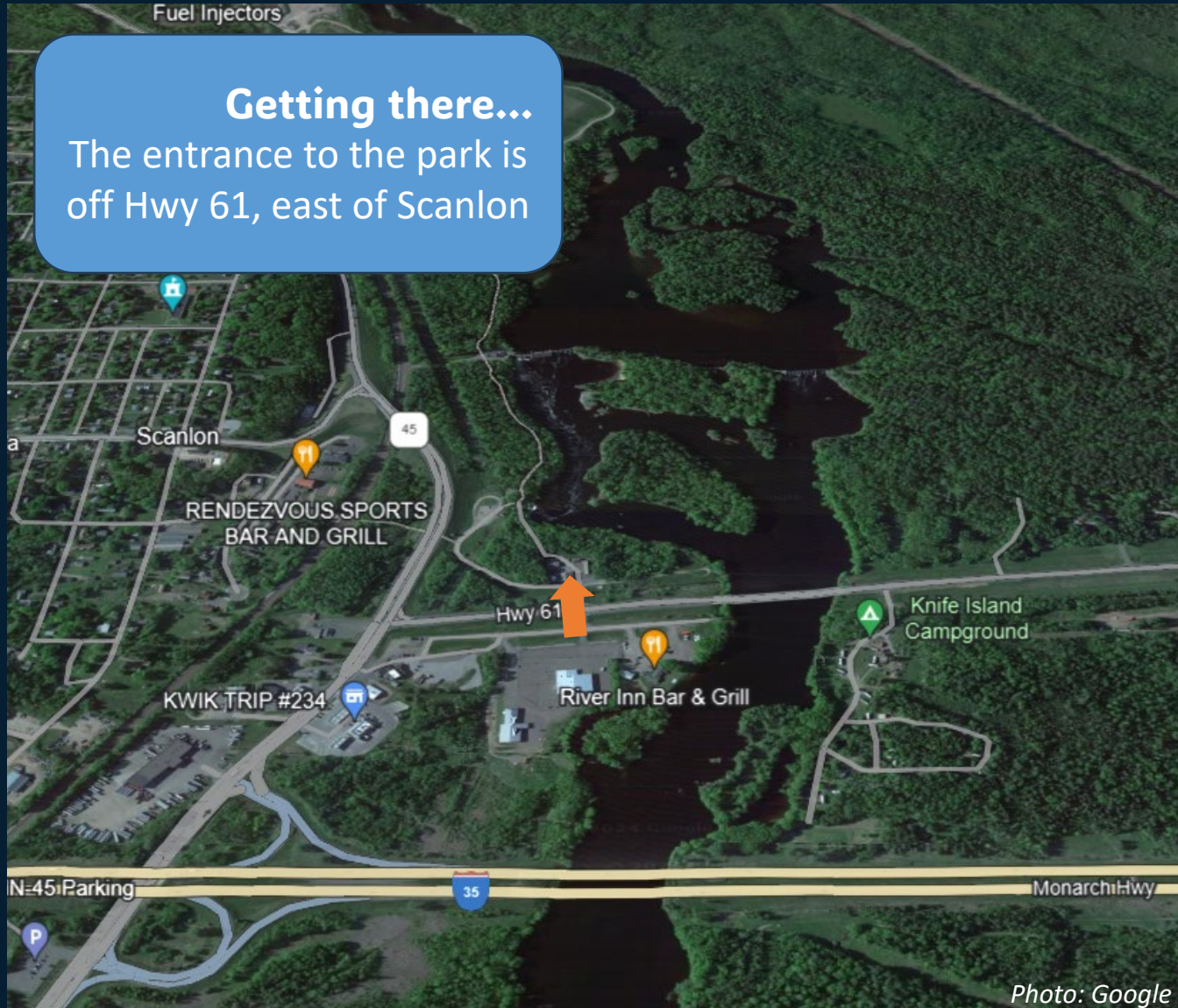
~input for GLRI Action Plan IV

St. Louis River Area of Concern

Scanlon Reservoir AOC Project

Getting there...

The entrance to the park is off Hwy 61, east of Scanlon



The problem:

Dioxin & furan contamination in the sediment

AOC Work:

Apply 238 tons of activated carbon over 13.5 acres





*Public Access is
restricted in the
reservoir itself*

Recreation Opportunities (Via Scanlon River Park):

- Accessible fishing dock
- Concrete paddling launch
- Birding
- Whitewater rafting



Photo: UMD Outdoor Rec



Photo: Swiftwater Adventures

St. Louis River Area of Concern

Chambers Grove AOC Project

Photo: Google



Getting there...

The entrance to the park is off Hwy 23 in the Fond du Lac Neighborhood (almost in WI!)

The problem:

- Hardened, sheet pile shoreline
- No connection to flood plain, flood damage
- Shortage of sturgeon spawning habitat



Chambers Grove *Recreation Opportunities*



AOC Work:

- ✓ Natural shoreline with native plants & floodplain connection
- ✓ Spawning habitat



Recreation Opportunities:

- Hiking, snow shoeing
- Accessible fishing platforms
- Gravel paddling launch (NWT)
- Birding
- Mountain biking
- Lots of new park infrastructure!



St. Louis River Area of Concern



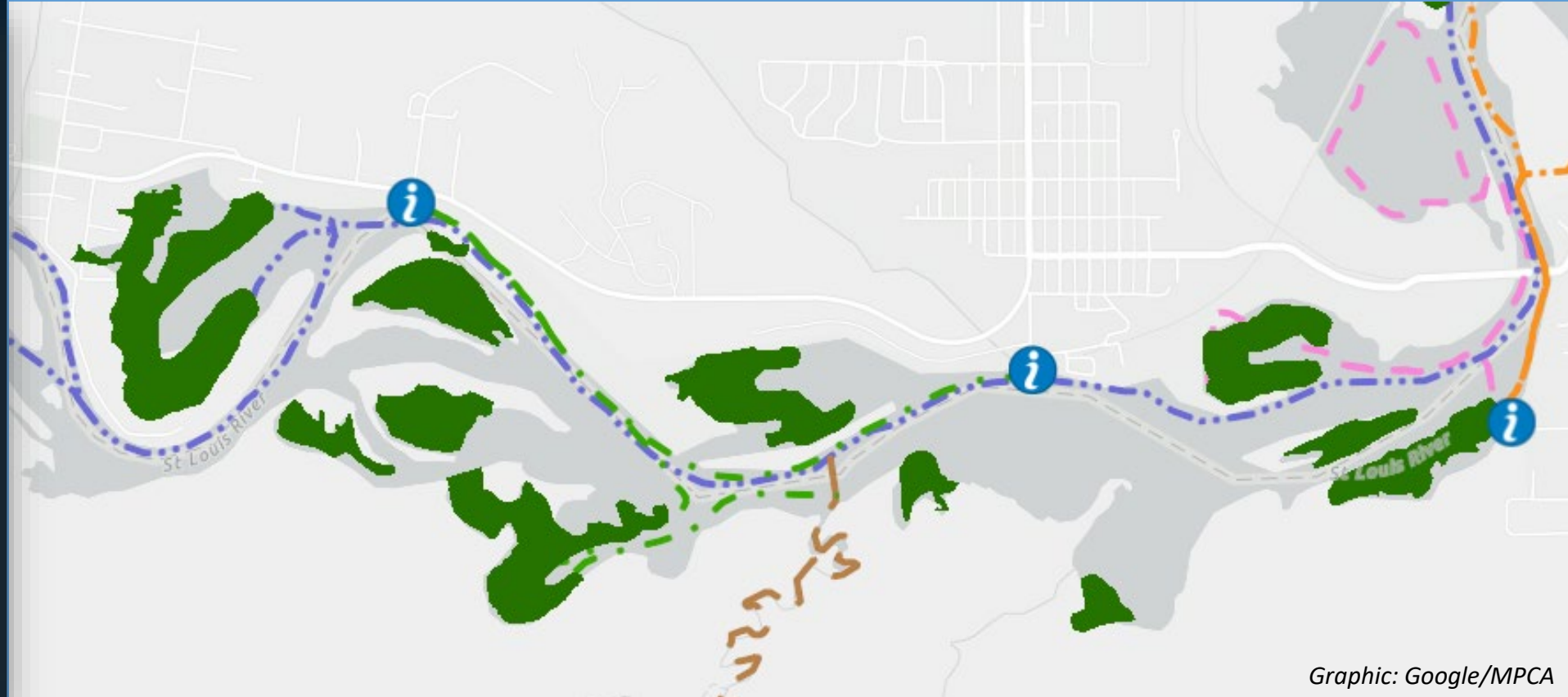
Manoomin (wild rice) *in progress*

The Problem: Manoomin beds nearly extirpated; historical accounts of abundant manoomin

AOC Work: Seeded 80,300 pounds of manoomin across 15 sites since 2015. Herbivory management, seeding & monitoring through 2026



Photo: 1854 Treaty Authority of
Duck Hunter Bay North



Graphic: Google/MPCA

Opportunities: Fishing, Hunting (WI),
Trapping, Paddling, Birding, Foraging
(Harvesting)

You may see seasonally fenced areas in
these bays to protect rice from herbivory



Photo: WDNR



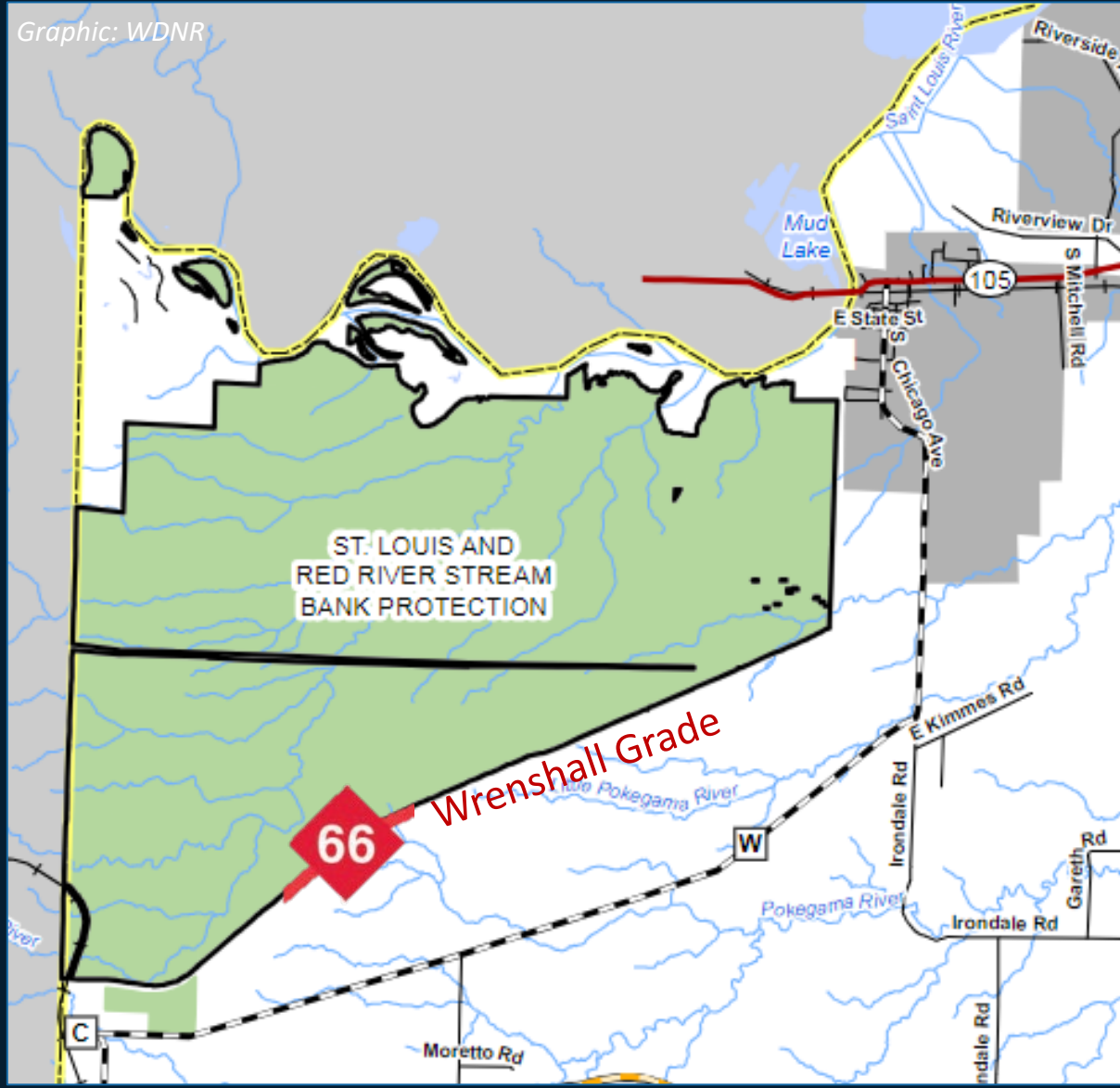
Manoomin (wild rice) *recreation opportunities*



Photo: MNDNR

St. Louis River Area of Concern

WI Streambank Protection Area *Master Planning Complete*



- 7,000 acres including 8 islands
- Protects the sensitive soils and habitats along the shoreline and tributaries
- Backcountry access is by boat or hike in on southern border (snowmobile trail 66)
- No motorized vehicle uses on property
- No formal parking area

Hunting/trapping, fishing, foraging, hiking, X-C skiing & snowshoeing, wildlife viewing



St. Louis River Area of Concern

Perch Lake *In progress (2024)*

The problem:

- Isolated from the river
- Low oxygen, accumulated sediment and organic material
- Restricted movement of fish, wildlife, and people

Getting there...

Public access is off Hwy 23.
Access by boat or foot  from Boy Scout landing.

Trail to Boy Scout
Landing

Existing culvert (4 ft)

Photo: Sam Geer

Photo: Google



AOC Work:

- ✓ Dredge sediment/muck from the lake
- ✓ Create hemi-marsh habitat for birds
- ✓ Add new openings to improve flow/connection

Recreation Opportunities:

- Walking
- Fishing (pier, shore, trail)
- Paddling
- Small boat access (future)
- Birding



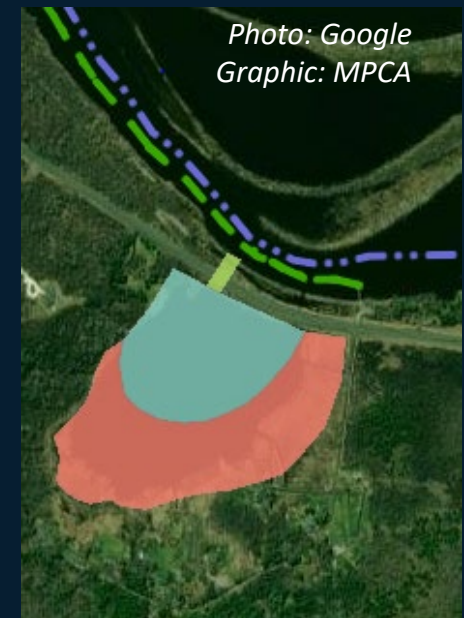
**CAUTION! Access in 2024
limited due to active
construction.**



Photo: MNDNR



Photo: MNDNR

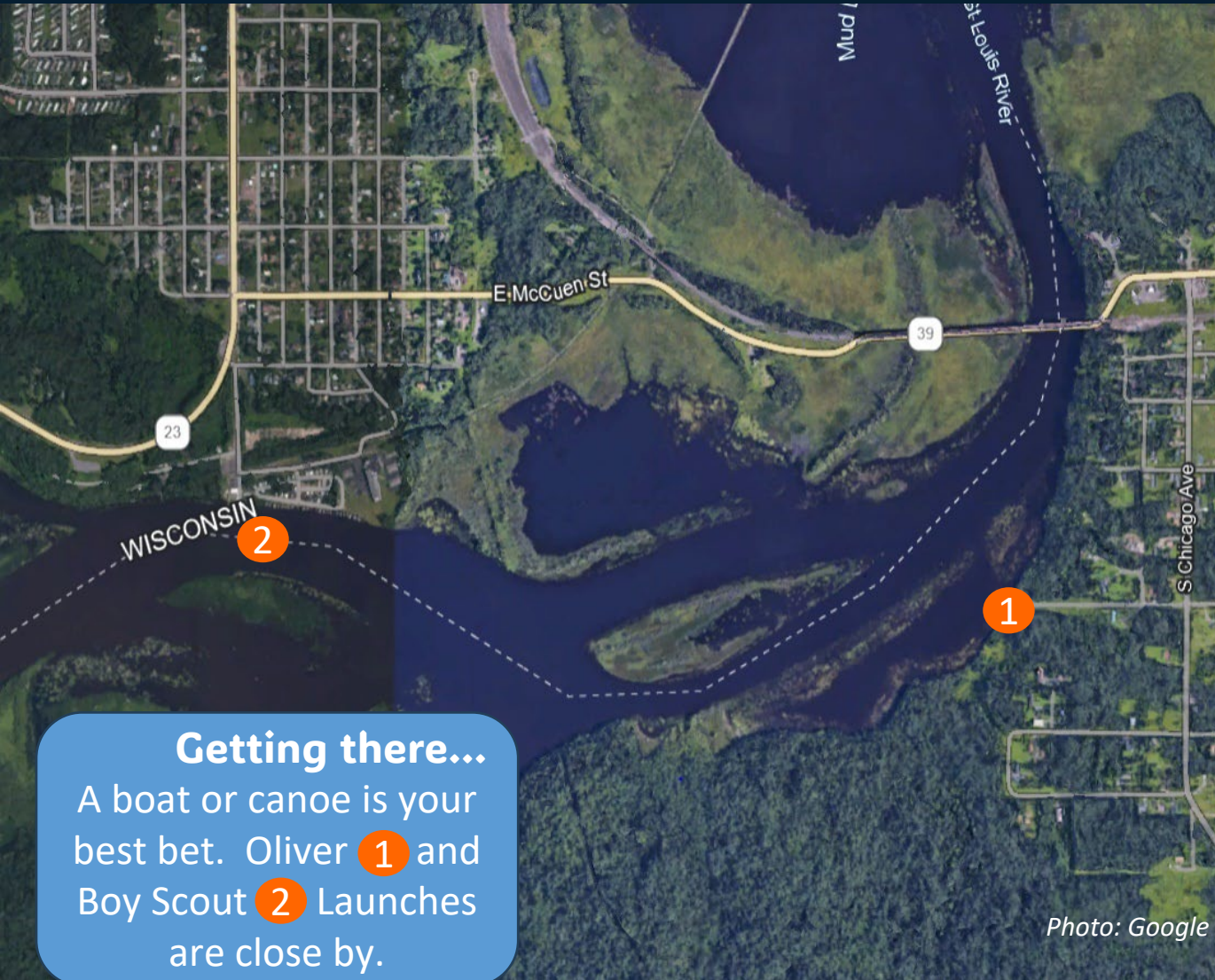


St. Louis River Area of Concern

Radio Tower Bay *complete*

The problem:

- Old rail pilings and sawmill waste littered the site and limited habitat.



St. Louis River Area of Concern

Radio Tower Bay *complete*

AOC Work:

- Removed 218 pilings and 115,000 CY of wood
- Increased water depth by an average of almost 4 feet
- Added deep-water fish habitat



Photos: MNDNR



Recreation Opportunities:

- Fishing
- Paddling
- Motor Boating
- Railroad Tour

St. Louis River Area of Concern

Spirit Lake/U.S. Steel *in progress (2024)*

The problem:

- Contamination resulting from legacy industrial discharges, poor habitat



St. Louis River Area of Concern

Spirit Lake/U.S. Steel *in progress (2024)*

AOC Work:

- Removed or capped 1.3M cyd of impacted materials
- Built 2 on-site confined disposal facilities
- Restored 138 ac aquatic habitat & 75 ac upland habitat



COMING SOON!

Trails, fishing stones, & pause points

The site is not yet open to the public!



Photos: USEPA

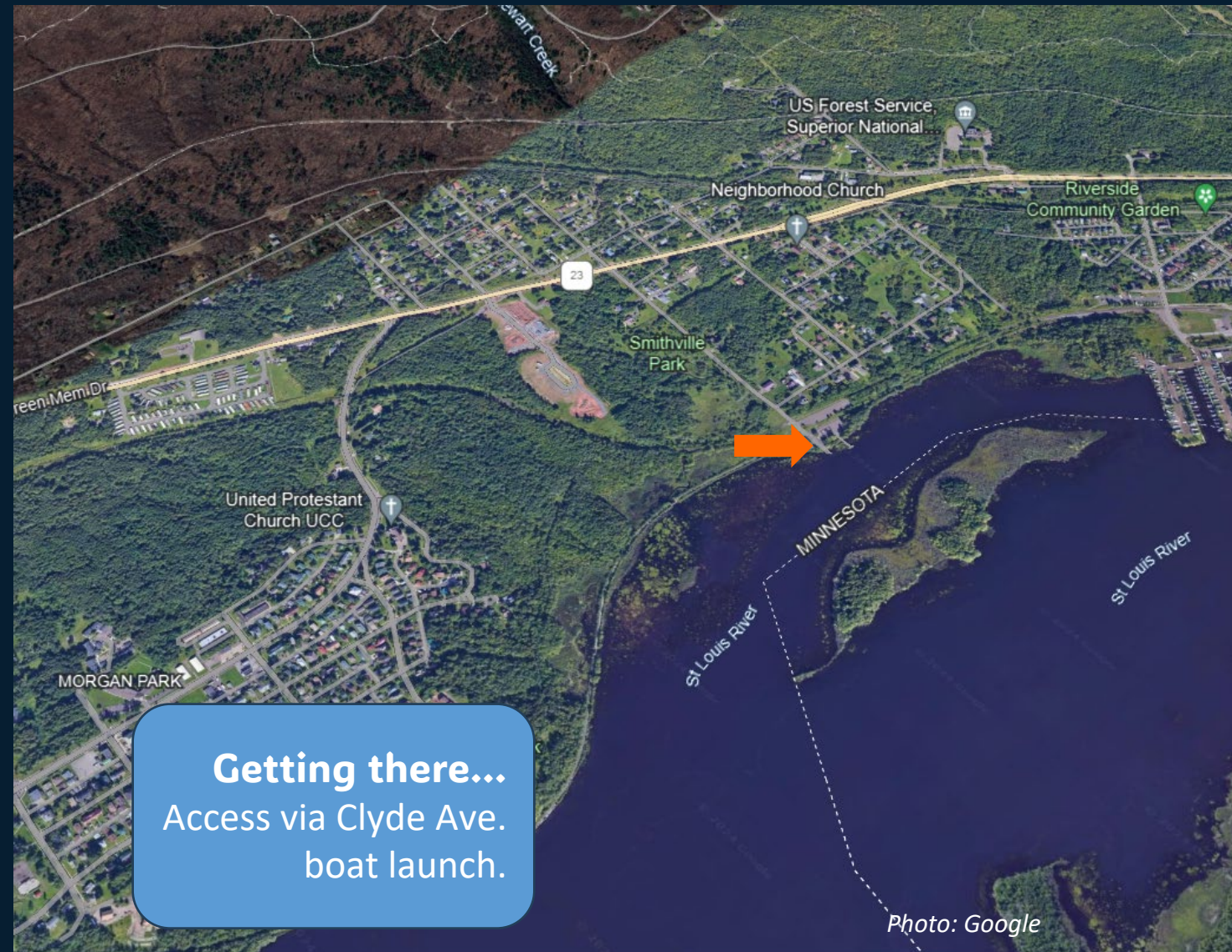
Recreation Opportunities:

- Fishing
- Paddling
- Motor Boating
- Centerboard Sailing
- Walking
- Birding
- Biking
- Railroad Tour

Munger Landing *Substantially Complete (2024)*

The problem:

- Contamination resulting from legacy industrial discharges, poor habitat



Getting there...
Access via Clyde Ave.
boat launch.

Photo: Google



Photo: MPCA

Munger Landing *Substantially Complete (2024)*

AOC Work:

- Removed 107,000 cyd contaminated sediment
- Restored 8 acres of high-quality aquatic habitat



Recreation Opportunities:

- Fishing
- Paddling
- Motor Boating
- Railroad Tour

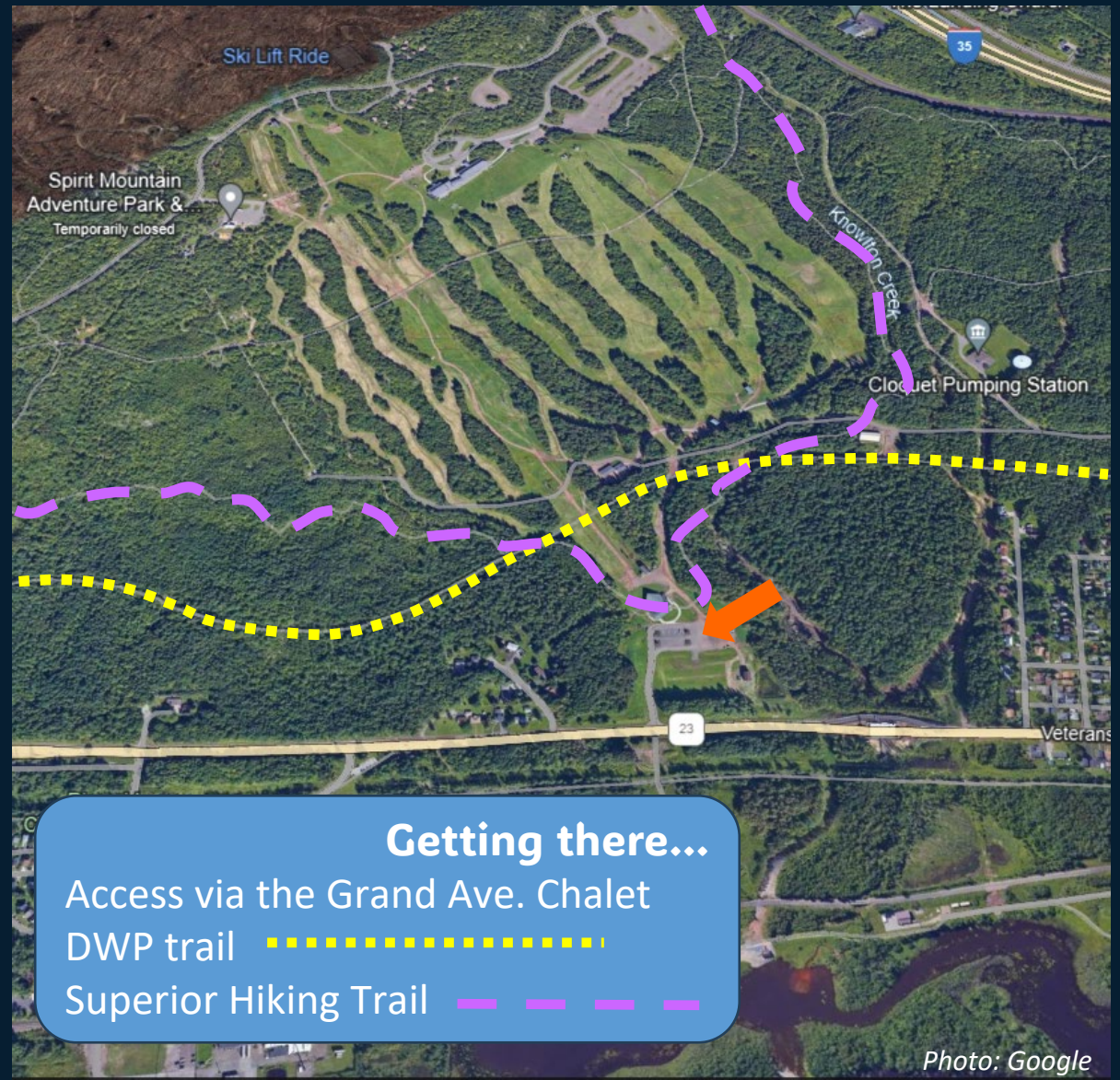
COMING SOON!

- ADA Accessible kayak launch
- Waabizheshikana Trail connection (birding, walking, biking)

Knowlton Creek *complete*

The problem:

- Eroded stream channel, fish barriers
- Uncontrolled runoff from Spirit Mountain ski area





Knowlton Creek *complete*

AOC Work:

- Restored 6,500' of stream channel
- Restored 8 acres of in-channel wetlands
- Removed barriers to fish migration
- Reduced & treated Spirit Mountain runoff



Recreation Opportunities:

- Fishing (brook trout stream)
- Walking/hiking
- Birding
- Mountain biking

The problem:

- Excess sediment and non-native cattails degraded the wetland

AOC Work:

- Removed invasive plants & sediment
- Restored wetlands and deep, overwintering fish habitat



Getting there...

Via the Waabizheshikana trail:

Park at Pulaski St **1**

or off Grand Ave. **2**

Additional entrances at S. 63rd Ave. **3**

and Indian Point Campground **4**

Photo: Google



Photo: MNDNR

St. Louis River Area of Concern



INDIAN POINT CAMPGROUND
7000 PULASKI ST, DULUTH, MN
Local & Canadian: 1 (218) 628-4977
U.S. Toll Free: 1 (855) 777-0652

CAMPSITES

- Full Hookup
- Water & Electric
- Electric
- Tent

Map labels: Fishing Dock, Canoe Dock, Western Waterfront Trail, Pavilion, Rest Rooms, Office / Store, Entrance, St. Louis River, to the Munger trail.



Kingsbury Bay complete

Recreation Opportunities:

- Fishing
- Walking/hiking
- Birding
- Biking
- Paddling
- Motor boating
- Camping
- Railroad tour



St. Louis River Area of Concern

St. Louis River/Interlake/Duluth Tar site *complete*



Photo: Google

Getting there...
Via the Waabizheshikana trail from
Kingsbury Bay or S. 63rd Ave 1 2
Paddle over from Woodstock Bay
landing (WI).

The problem:

- Location of pig iron, coking, and coal gasification plants (1890s-1962)
- Contamination in soils and sediment
- Degraded habitat



Photo: Zenith Furnace Company

AOC Work:

- Removed tar
- Remediated contaminated soils (upland) and sediment (in-water)
- Techniques included removal, capping, confined disposal



St. Louis River Area of Concern

Grassy Point *complete*

Getting there...

Public parking at end of Lesure St.,
via Waseca Industrial Rd.
Paddle over from Arrowhead Public
Boat Ramp (WI).

The problem:

- Former location of two sawmills (1890s-1910s)
- Large deposits of sawmill waste
- Shallow, degraded habitat



Photo: Google

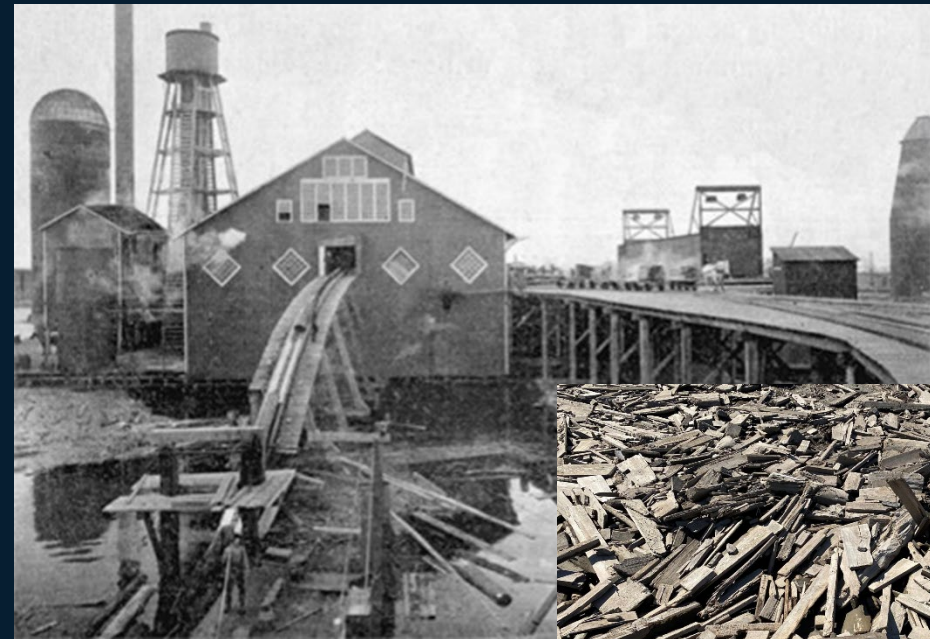


Photo: MNDNR

St. Louis River Area of Concern

Grassy Point *complete*

Recreation Opportunities:

- Fishing
- Motor Boating
- Paddling (*carry down access*)
- Walking
- Birding



Additional work by the MN Land Trust enhanced Grassy Point for birds and added a walking trail!



Photo: MNDNR

AOC Work:

- Removed 170,000 cyd of wood waste & old mill pilings
- Created 18-acre island complex to shelter the bay (planted with native plants)
- Created deep, off channel fish habitat
- Restored wetland habitat



St. Louis River Area of Concern

40th and 21st Avenues West *complete*

Getting there...

Water Access only from Rice's Point Landing (MN) or Arrowhead Public Boat Ramp (WI).



The problem:

- Wetlands were destroyed during historic development of the harbor
- Loss of depth diversity
- Low level contamination in sediment
- Low habitat value

AOC Work:

- Built underwater shoals to cover contaminants and diversify depths
- Covered shoals with “biomedium” to promote recovery of plants and bugs
- Beneficially used clean sand dredged to maintain the harbor



Ponds behind Erie Pier *complete*

Getting there...

Accessible by Duluth's Cross-City trail



The problem:

- Historic releases of contamination
- Pollution in sediment (heavy metals, mercury, and more) making its way into the food web.
- Pollution present in the wetland ponds and Shoppers Creek.



AOC Work:

- Removed 45,000 cyd of contaminated sediment
- Deepened the ponds & opened the causeway
- Placed clean substrate across 14.4 acres
- Restored upland habitat

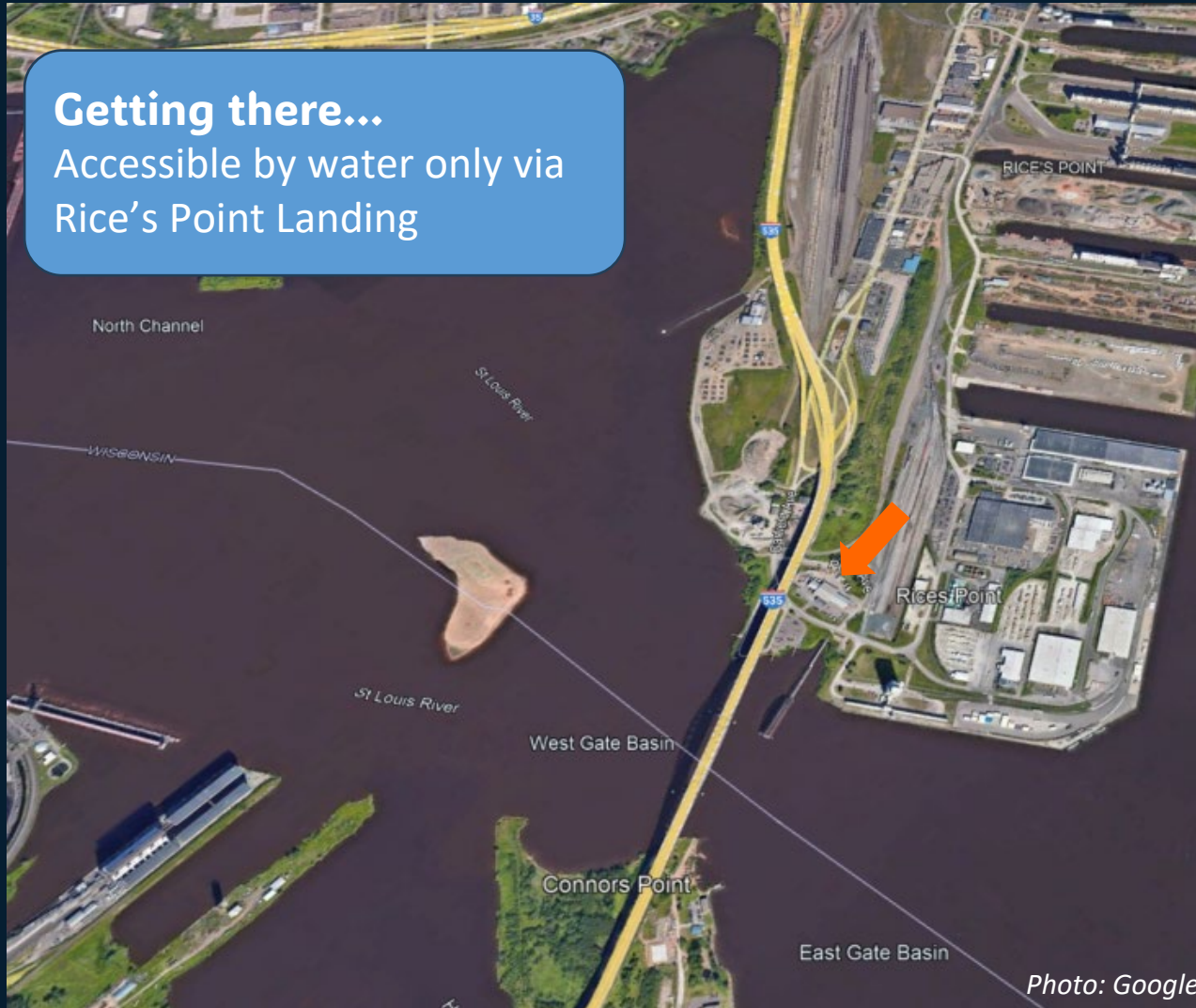


St. Louis River Area of Concern

Interstate Island *complete*

Getting there...

Accessible by water only via
Rice's Point Landing



The problem:

- Rising water levels flooded the island (a Wildlife Management Area)
- Common Tern nesting habitat was threatened
- Competition with gulls



2003



2019

AOC Work

- Elevated the island to address flooding
- Enlarged the island
- Enhanced & protected the Common Tern nesting area

Recreation Opportunities near this site:

- Birding
- Centerboard Sailing
- Motor Boating
- Fishing
- Paddling

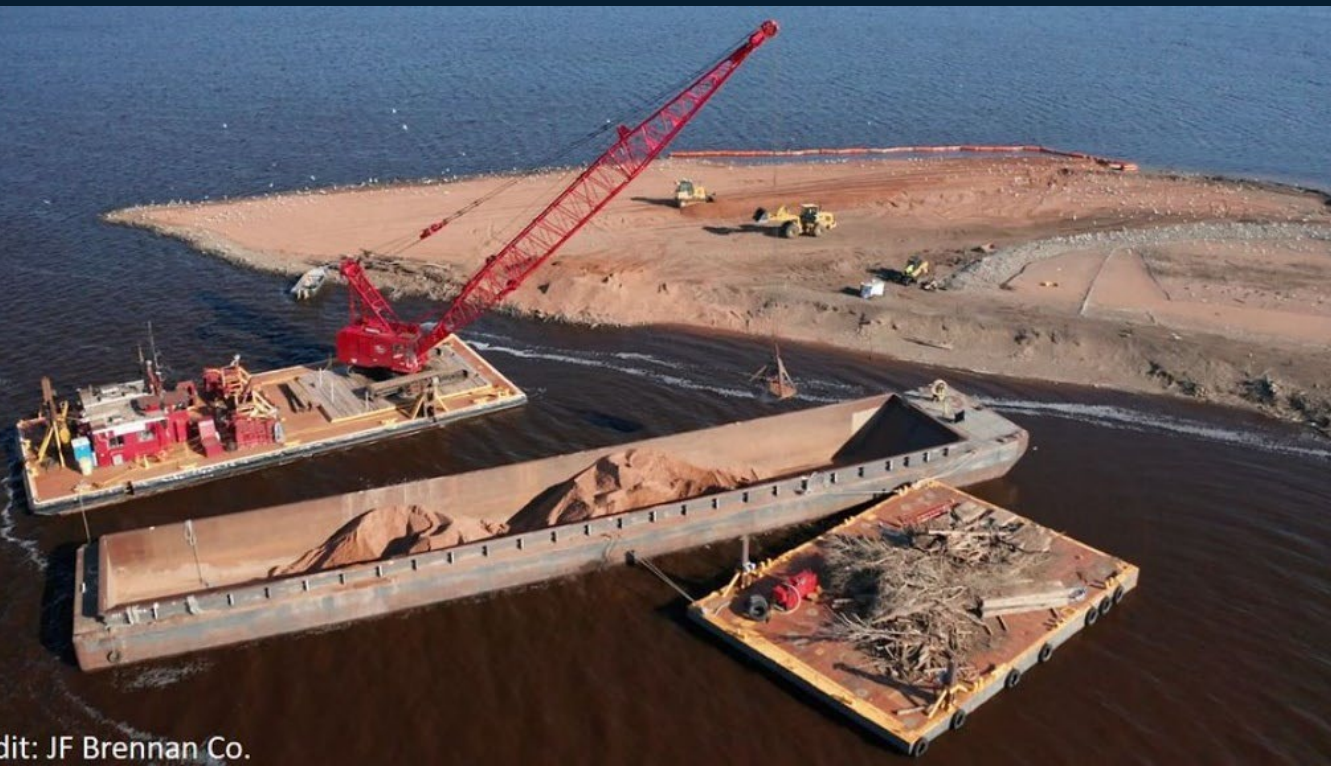


Photo: JF Brennan Co.



Photo: MNDNR



Photo: MNDNR

Barker's Island Beach Restoration *complete*

2019 AOC project addressed excessive E. coli bacteria:

- Beach re-design, coarse sand, regular grooming
- Storm water features, wildlife deterrents
- Boardwalk, trash bins, bathroom



Barker's Island Beach Restoration

recreation opportunities

Swimming, paddling, walking, urban biking, wildlife viewing, picnicking, nearby canoe/kayak rack rental, paddleboard rental



Photo: WDNR



Photo: City of Superior



Pickle Pond Restoration *in progress (2024)*

Problem: rail grade cut off a portion of the bay and created this “pond” leading to poor water circulation, degraded habitat, and contaminated sediments

2023 project:

- Removed 20,000 cyd contaminated sediment
- Restoring 17 acres of fish and wildlife habitat
- Reducing stormwater inputs to the pond
- New openings/access to the water
- Transferred property to public ownership



Photo: Google
Graphics: MPCA

Pickle Pond Restoration *recreation opportunities*



Photo: WDNR

Fishing, boating/paddling, walking, (Osaugie Trail), wildlife viewing, urban biking



Piping Plover Nesting Habitat *complete*

Problem: endangered Piping Plover lost nesting habitat due to development and disturbance.

2019 Project:

- Enlarged the site with dredge material to 14 acres
- Created foraging and nesting habitat
- Restored native dune grass
- Fence limits disturbance and nest predators

Getting there...

Park at the gate off WI Point Road. Accessible by foot traffic or boat during the open season



Piping Plover Nesting Habitat

recreation opportunities

NO ACCESS DURING NESTING SEASON
April 1st- August 24th- site is fenced

Fishing, motor boating, paddling, birding



Wisconsin Point Dune Restoration *complete*

2018 AOC project:

- Reconnected coastal habitat, restored shoreline
- Enlarged 6 parking lots with stormwater management features
- Constructed boardwalks to the beach to protect dune habitat
- Installed trash receptacles & bathrooms
- Enhanced a canoe/kayak landing & a boat launch
- Installed interpretive signs



Photo: Google
Graphics: MPCA



Getting there...

Take Bear Creek Trail or Moccasin Mike Road and turn left to WI Point Rd (to Lighthouse). Park at designated lots along the road.



Wisconsin Point Dune Restoration *recreation opportunities*



Picnicking, swimming, wildlife viewing, foraging, fishing, hiking, paddling, motorized boating



Allouez Bay Manoomin Restoration *in progress (2026)*

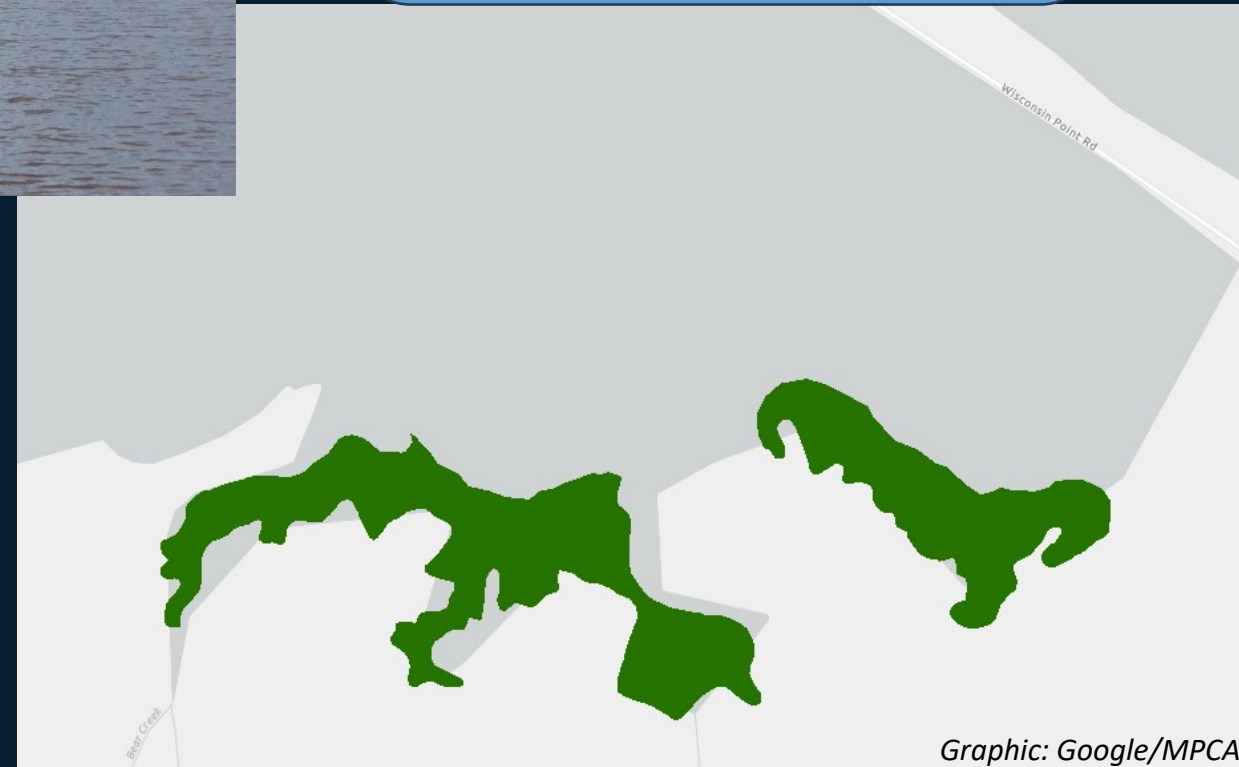
You may see fenced areas in these bays to protect rice from herbivory



Getting there...

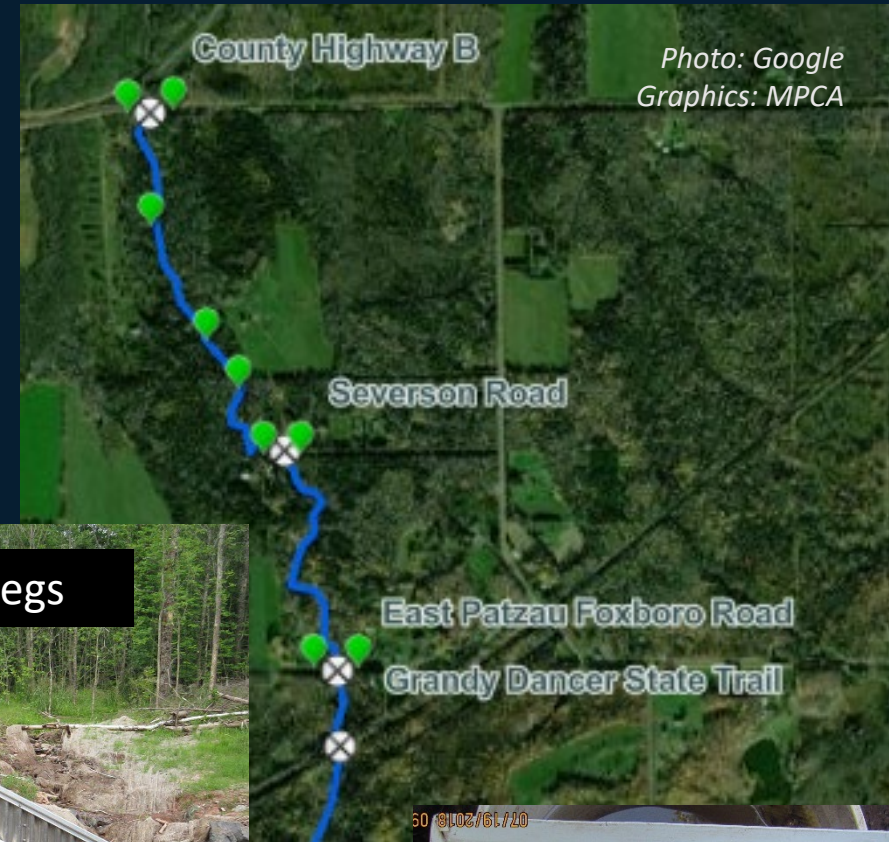
By watercraft (Loon's foot landing, WI Point Landing, Canoe launch. Bear Creek Trail will bring you near these areas

- AOC Work: herbivory management, seeding, monitoring.
- Paddling, foraging (harvesting), wildlife viewing, hunting, fishing, motorized boating



Little Balsam Creek Fish Passages *in progress (2024)*

- AOC Work: Replaced 3 fish passage barriers
- Final work is installing a trail bridge on the Gandy Dancer Trail
- Reconnecting 5.07 miles of Class I Trout Waters
- Fishing, wildlife viewing, motorized trails



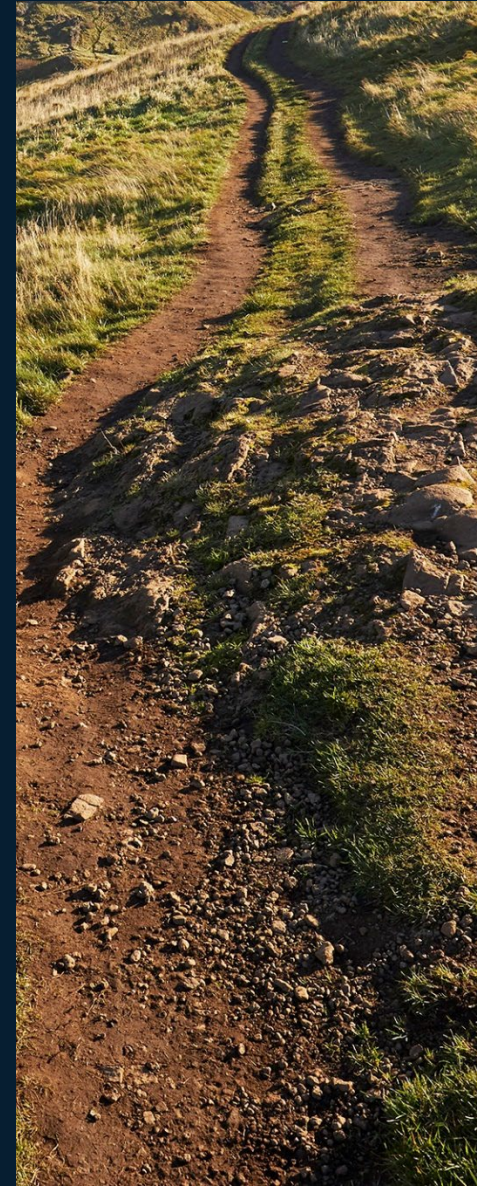
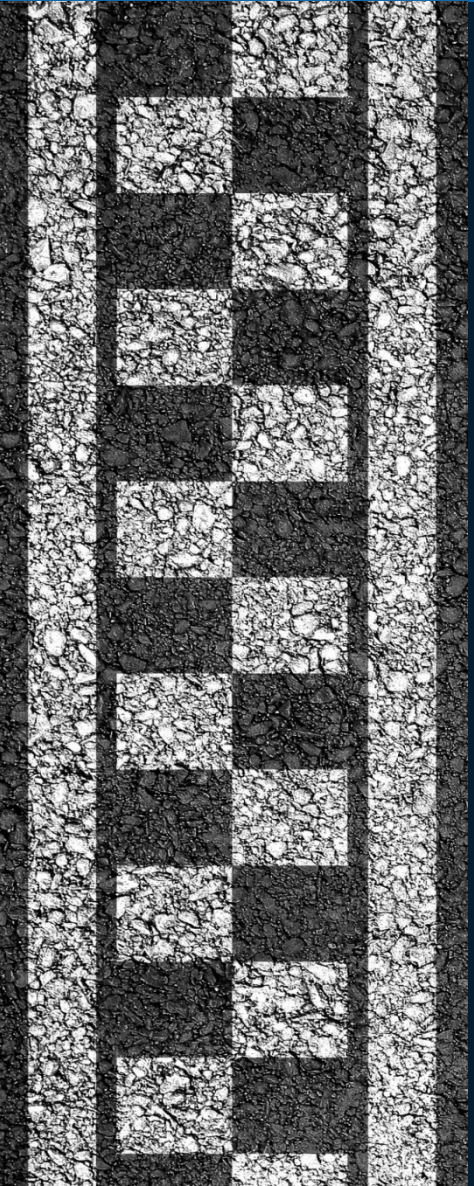
<https://dnr.wisconsin.gov/topic/Fishing/regulations/troutregs>



St. Louis River Area of Concern

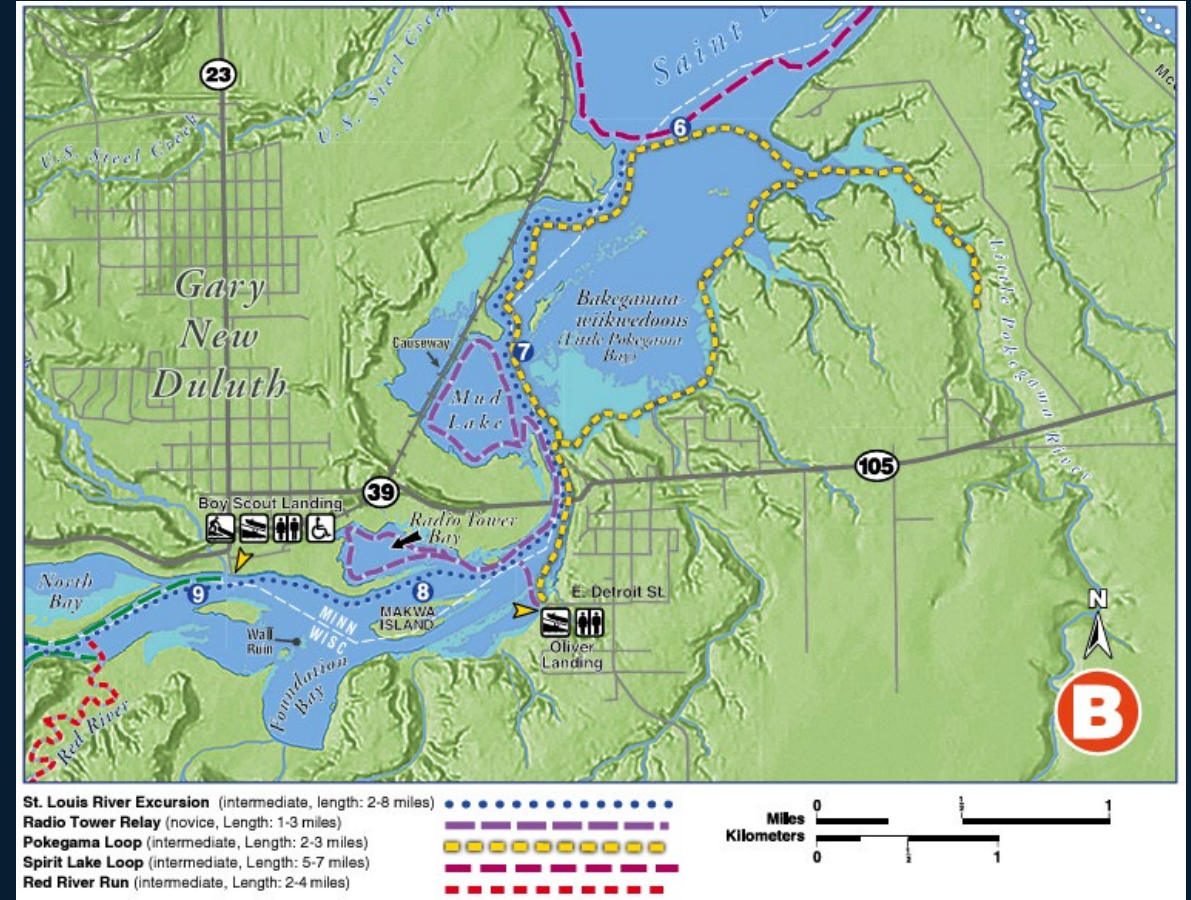
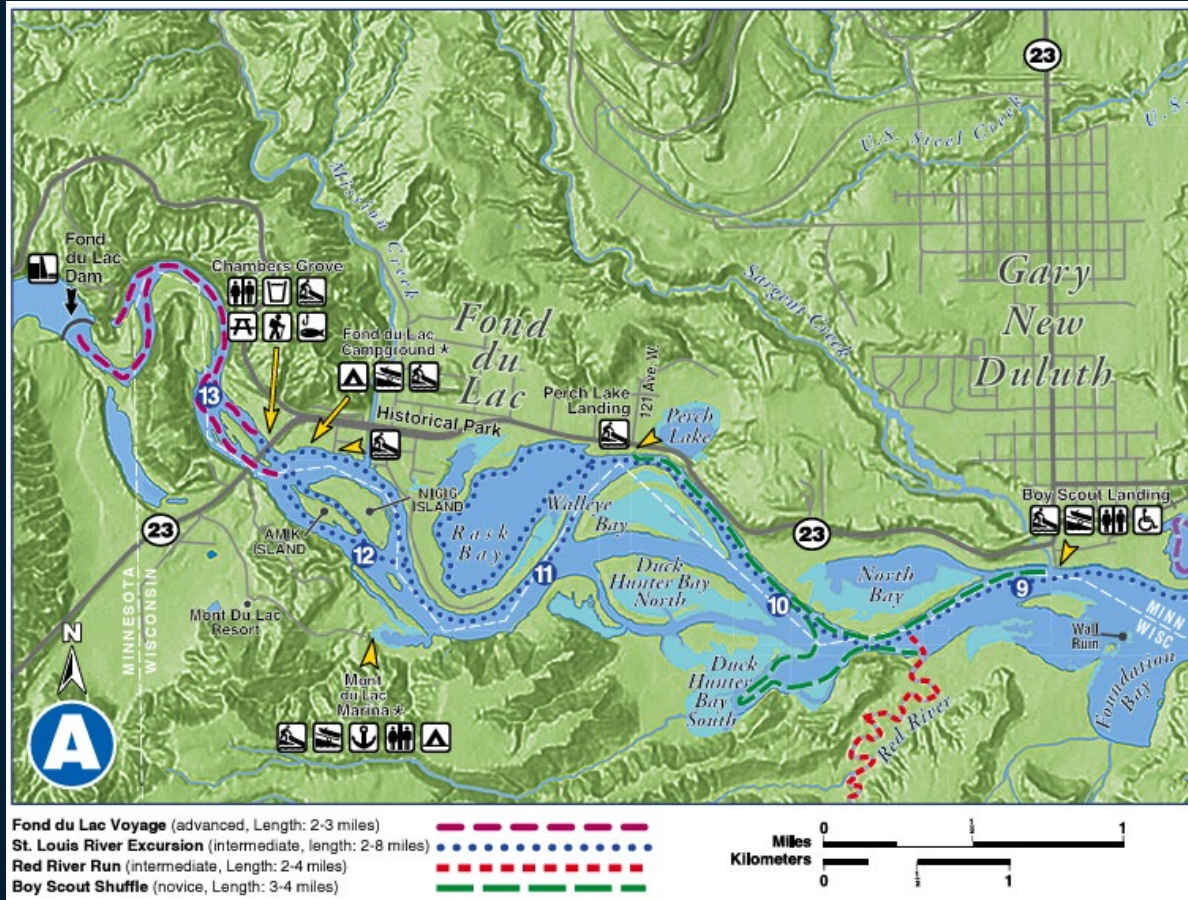


River Pathways



St. Louis River Area of Concern

National Water Trail



St. Louis River
Area of Concern

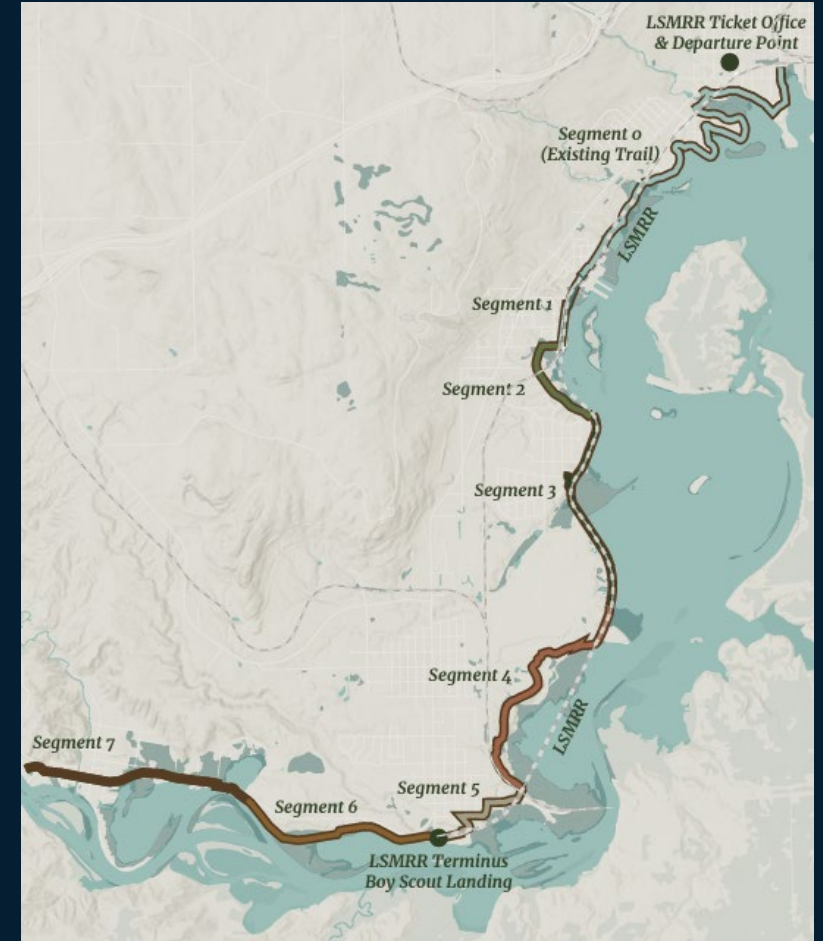
Lake Superior & Mississippi Railroad

Munger Landing Knowlton Creek Kinross Bay



Duluth River Train
www.duluthrivertrain.com

WAABIZHESHIKANA TRAIL



Plans to extend the trail to
Chambers Grove



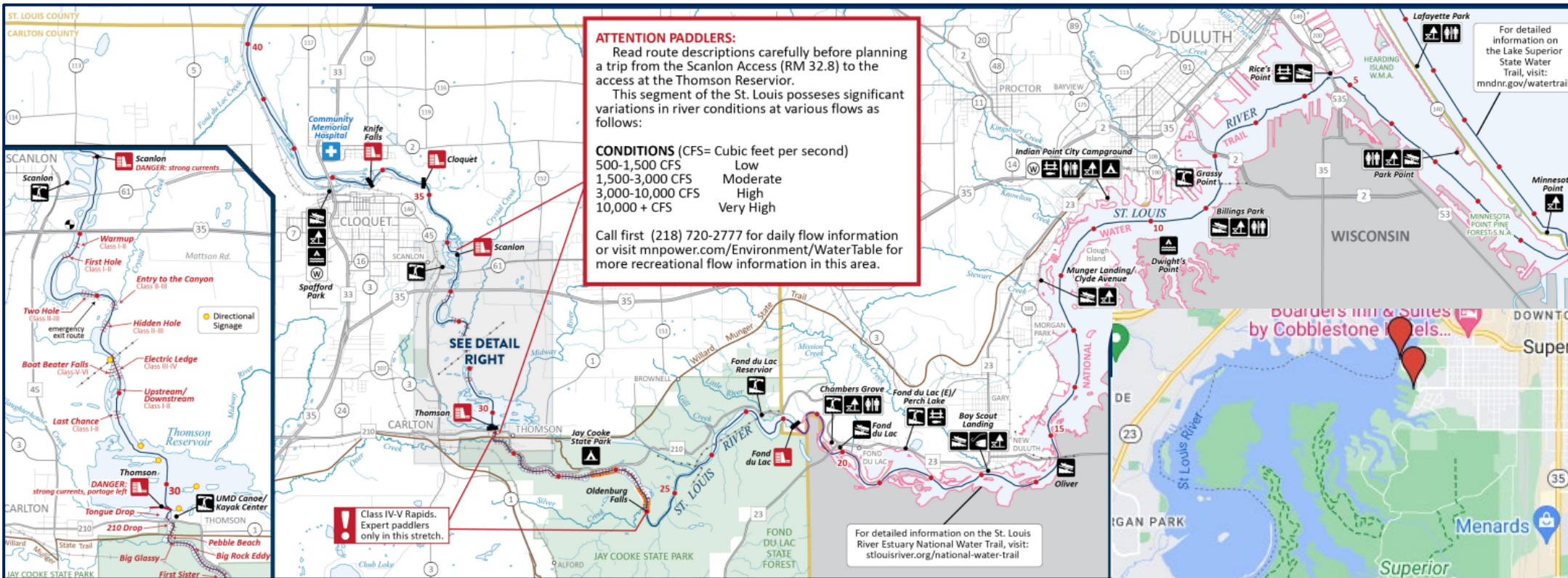
<https://www.youtube.com/watch?v=yZSb4JoKAVc>

St. Louis River Area of Concern

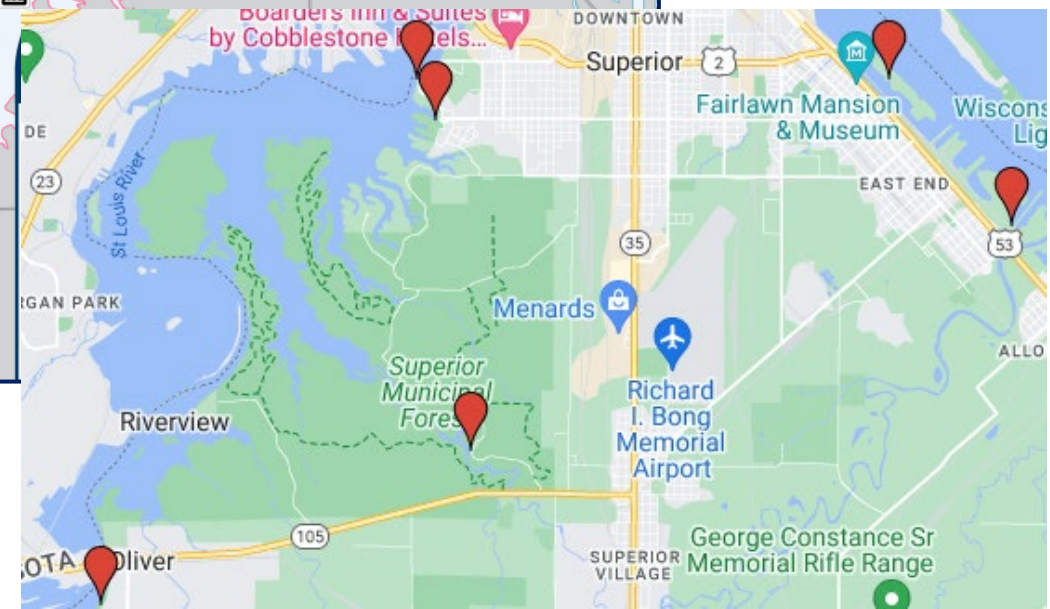
Public Boat Launches in MN & WI

https://files.dnr.state.mn.us/maps/canoe_routes/stlouis3.pdf

https://www.wisconsinrivertrips.com/public_landings.html



<https://www.paddlesafetwinports.org>





PADDLE SAFE Twin Ports

Where to Launch | Safety Information | Float Plan | About | <https://www.paddlesafetwinports.org/>



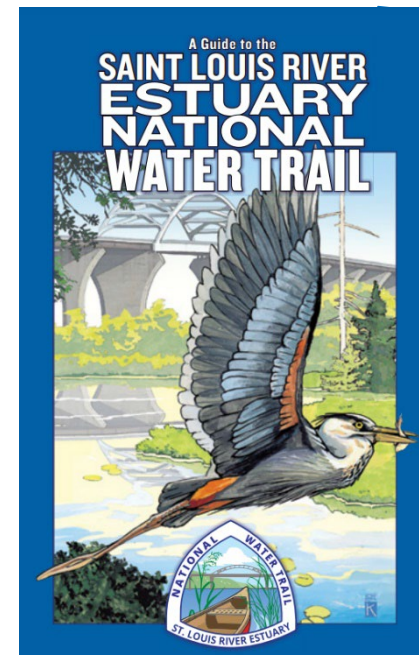
ST. LOUIS RIVER ESTUARY NATIONAL WATER TRAIL MASTER PLAN DULUTH, MINNESOTA & SUPERIOR, WISCONSIN

Approved by Duluth City Council March 27, 2017

Cities of Duluth, MN & Superior, WI:
<https://duluthmn.gov/media/7316/final-water-trail-master-plan.pdf>



St. Louis River Alliance:
<https://www.stlouisriver.org/national-water-trail>



Safely recreate
in the St. Louis
River Estuary

LET'S GET RECREATING!



Recreating in the St. Louis River: A Virtual Scavenger Hunt

PRIZES!

Learn more:

- Handouts, flyers
- St. Louis River Alliance website and social media
- Scavenger hunt and rules found here:

<https://tinyurl.com/2024SLRScavengerHunt>



Rick Gitar, Fond du Lac's AOC Coordinator
<https://www.fdlrez.com/>



Melissa Sjolund, MNDNR's AOC Coordinator
https://www.dnr.state.mn.us/waters/watermgmt_section/st-louis-river-restoration/index.html



Barb Huberty, MPCA's AOC Coordinator
<https://www.pca.state.mn.us/air-water-land-climate/cleaning-up-the-st-louis-river>



Matt Steiger, Wisconsin Dept. of Natural Resources AOC Coordinator
<https://dnr.wisconsin.gov/topic/GreatLakes/StLouis.html>

Google: MPCA SLRAOC



Restoration and remediation projects

The interactive story map describes the SLRAOC habitat restoration projects in Minnesota and Wisconsin, as well as the remediation projects located in Minnesota.

[Story map](#)



Collection

Undoing the Unintended Consequences of Past Actions

Learn more about the history and future of the St. Louis River Area of Concern

[Table of Contents](#)



1 Chapter 1: How to Use This Collection



2 Chapter 2: What is the St. Louis River Area of Concern?



3 Chapter 3: Habitat Restoration Sites



4 Chapter 4: Contaminated Sediment Sites



5 Chapter 5: Past Habitat Projects in the AOC



6 Chapter 6: More Information